

Fuji USER MANUAL

DRILLS

MODELS : FRD-6PH-5, -7



FRD-6PH-5



FRD-6PH-7

⚠ Refer to "The Instructions and Warning for Safety Use" enclosed in each tool box.

SPECIFICATIONS

MODEL	Spindle Type		Drill Chuck	Chuck Capacity	Max. Output	Stall Torque	Rotational Frequency	Max. Air Consumption	Distance from Center to Side	Overall Length	Mass	Air Inlet Thread Size	Air Hose Size	
	Type													mm
FRD-6PH-5	—	Taper	J.T.No.2S	DCK-10J	10	0.32	7.5	1,300	0.59	21.0	243	1.4	PT or NPT1/4	9.5
	TH	Thread	3/8-24UNF	DCK-10	10	0.32	7.5	1,300	0.59	21.0	247	1.4	PT or NPT1/4	9.5
	TH W/O C	Thread	3/8-24UNF	—	—	0.32	7.5	1,300	0.59	21.0	193	1.2	PT or NPT1/4	9.5
FRD-6PH-7	—	Taper	J.T.No.6	DCK-13J	13	0.32	15.8	600	0.59	22.5	258	1.5	PT or NPT1/4	9.5
	TH	Thread	1/2-10UNF	DCK-13	13	0.32	15.8	600	0.59	22.5	260	1.5	PT or NPT1/4	9.5
	TH W/O C	Thread	1/2-10UNF	—	—	0.32	15.8	600	0.59	22.5	198	1.2	PT or NPT1/4	9.5

* Standard type is Taper Spindle type. Please specify Spindle type when ordering.

The performance figures are at 0.63 Mpa (6.3bar).

* Please specify if you need a Drill Chuck or not when ordering Thread Spindle type.

Fuji Industrial Technique Co.,Ltd.

2-1-14, Kamiji, Higashinari-ku, Osaka, 537-0003 Japan

Tel : 81-6-6972-2335

Fax : 81-6-6972-2380

ASSEMBLY TOOLS

ABRASIVE TOOLS

DRILLS / TAPPERS

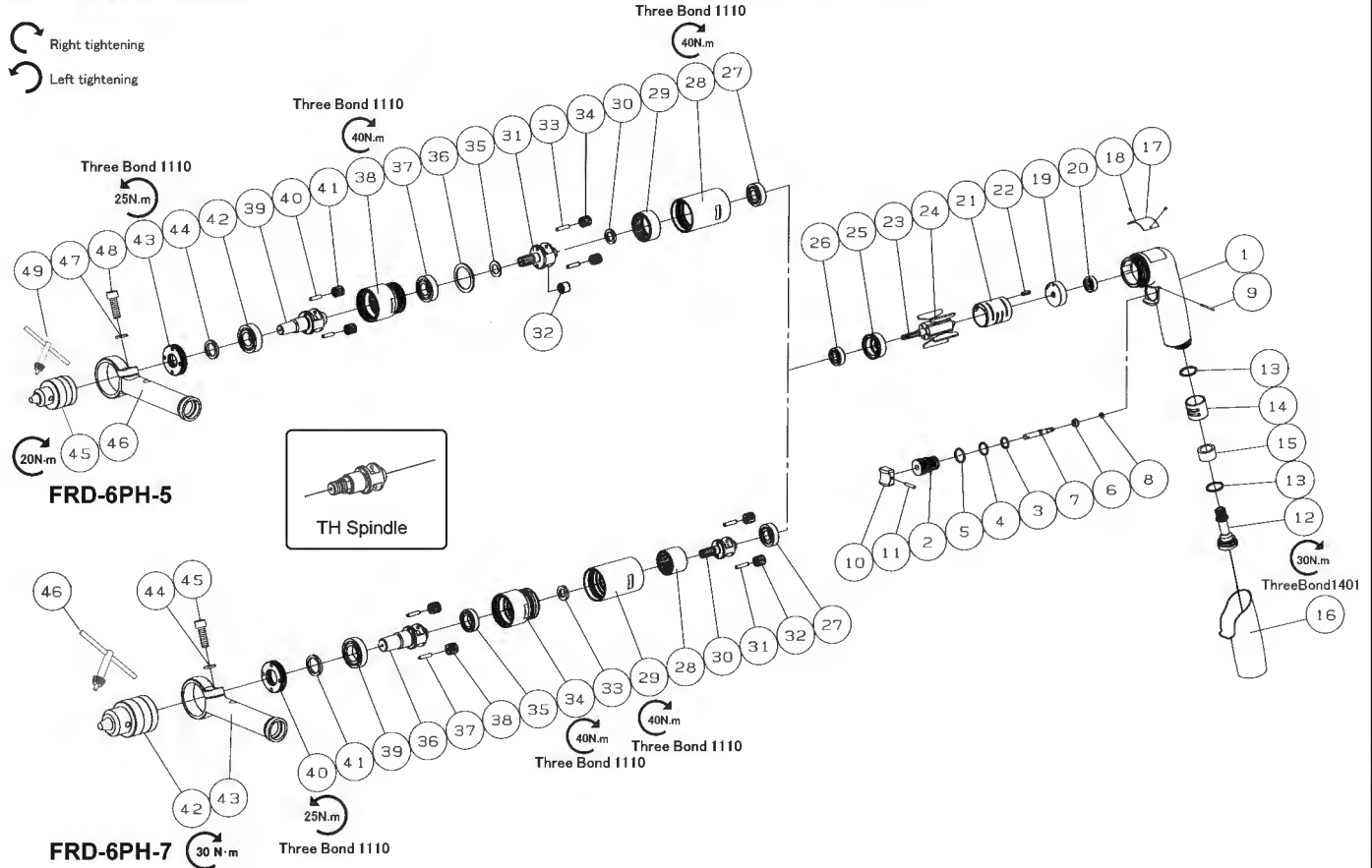
PERCUSSIVE TOOLS

AIR MOTORS

OTHER PRODUCTS

MODELS : FRD-6PH-5, -7

EXPLODED VIEW



PARTS LIST

Index No.	Parts No.	Parts Name	Qty	Index No.	Parts No.	Parts Name	Qty	Index No.	Parts No.	Parts Name	Qty
FRD-6PH-5,-7				FRD-6PH-5				FRD-6PH-7			
—	D-176006-00	Housing Assy		—	D-176029-00	Gear Assy		—	D-176029-01	Gear Assy	
1	D-176201-00	Housing	1	27	BB-6001	Ball Bearing	1	27	BB-6001	Ball Bearing	1
2	D-176109-00	Throttle Valve Bushing	1	28	D-176430-01	No.1 Gear Case	1	28	D-176417-02	No.1 Internal Gear	1
3	O-S12	"O"Ring	1	29	D-176417-01	No.1 Internal Gear	1	29	D-176430-02	No.1 Gear Case	1
4	O-S14	"O"Ring	1	30	D-176435-00	Thrust Washer	1	30	D-176416-01	No.1 Planet Gear Frame	1
5	O-S16	"O"Ring	1	31	D-176416-00	No.1 Planet Gear Frame	1	31	NR-419	Needle Roller	2
6	D-176110-00	Throttle Valve	1	32	D-176401-00	No.1 Pinion	1	32	D-176413-00	No.1 Planet Gear	2
7	D-176113-00	Throttle Valve Rod	1	33	NR-417	Needle Roller	2	33	D-176435-03	Thrust Washer	1
8	O-P3	"O"Ring	1	34	D-176413-01	No.1 Planet Gear	2	—	D-176027-02	Spindle Assy (Taper spindle)	
9	GP-224GLC	Grooved Pin	1	35	D-176435-01	Thrust Washer	1	—	D-176027-07	Spindle Assy (TH spindle)	
10	W-125121-00	Throttle Valve Lever	1	36	D-176435-02	Thrust Washer	1	34	D-176431-01	No.2 Gear Case	1
11	SP-2.518	Spring Pin	1	—	D-176027-01	Spindle Assy (Taper spindle)		35	BB-6902	Ball Bearing	1
12	W-371171-00	Inlet Joint	1	—	D-176027-06	Spindle Assy (TH spindle)		36	D-176438-02	Spindle (Taper)	1
13	O-S18	"O"Ring	2	37	BB-6002	Ball Bearing	1	37	D-176438-07	Spindle (TH)	1
14	W-302250-00	Exhaust Cover	1	38	D-176431-00	No.2 Gear Case	1	37	NR-419	Needle Roller	2
15	D-176237-00	Muffler Pad	1	39	D-176438-01	Spindle (Taper)	1	38	D-176418-01	No.2 Planet Gear	2
16	D-176557-00	Protector	1	40	D-176438-06	Spindle (TH)	1	39	BB-6904	Ball Bearing	1
17	NP-0020	Name Plate	1	41	NR-419	Needle Roller	2	40	D-176221-01	Spindle Bearing Cover	1
18	NPN-0X3.2	Screw Rivet	2	42	D-176418-00	No.2 Planet Gear	2	(41)	D-176222-01	Felt Ring	1
19	D-176210-00	Cylinder Upper Plate	1	43	BB-6003	Ball Bearing	1	42	DCK-13J	Drill Chuck (for Taper spindle)	1
20	BB-626	Ball Bearing	1	44	D-176221-00	Spindle Bearing Cover	1	(46)	DCK-13	Drill Chuck (for TH spindle)	1
21	D-176209-00	Cylinder	1	(44)	D-176222-00	Felt Ring	1	(46)	DCK-13H	Chuck Handle	1
(22)	SP-26	Spring Pin	1	45	DCK-10J	Drill Chuck (for Taper spindle)	1	43	G-201604-01	Dead Handle	1
23	D-176207-00	Rotor (FRD-6PH-7)	1	(47)	DCK-10	Drill Chuck (for TH spindle)	1	(44)	SW-8	Spring Washer	1
24	D-176207-01	Rotor (FRD-6PH-5)	1	(49)	DCK-10H	Chuck Handle	1	(45)	CS-825	Cap Screw	1
25	W-100208-00	Rotor Blade	5	46	G-201604-01	Dead Handle	1				
26	D-176211-00	Cylinder Lower Plate	1	(47)	SW-8	Spring Washer	1				
	BB-608	Ball Bearing	1	(48)	CS-825	Cap Screw	1				

- The related parts are shown in a thick frame.
- #21, #43, #45, #46 are supplied together with parts shown in (), (FRD-6PH-5)
- #21, #40, #42, #43 are supplied together with parts shown in (), (FRD-6PH-7)
- Specify parts number and quantity when ordering.

Standard Accessories

AC No.	Description	Qty
F-706	6mm Hex. Pin Wrench	1
IB-202N00	Inlet Bushing (for NPT only)	1