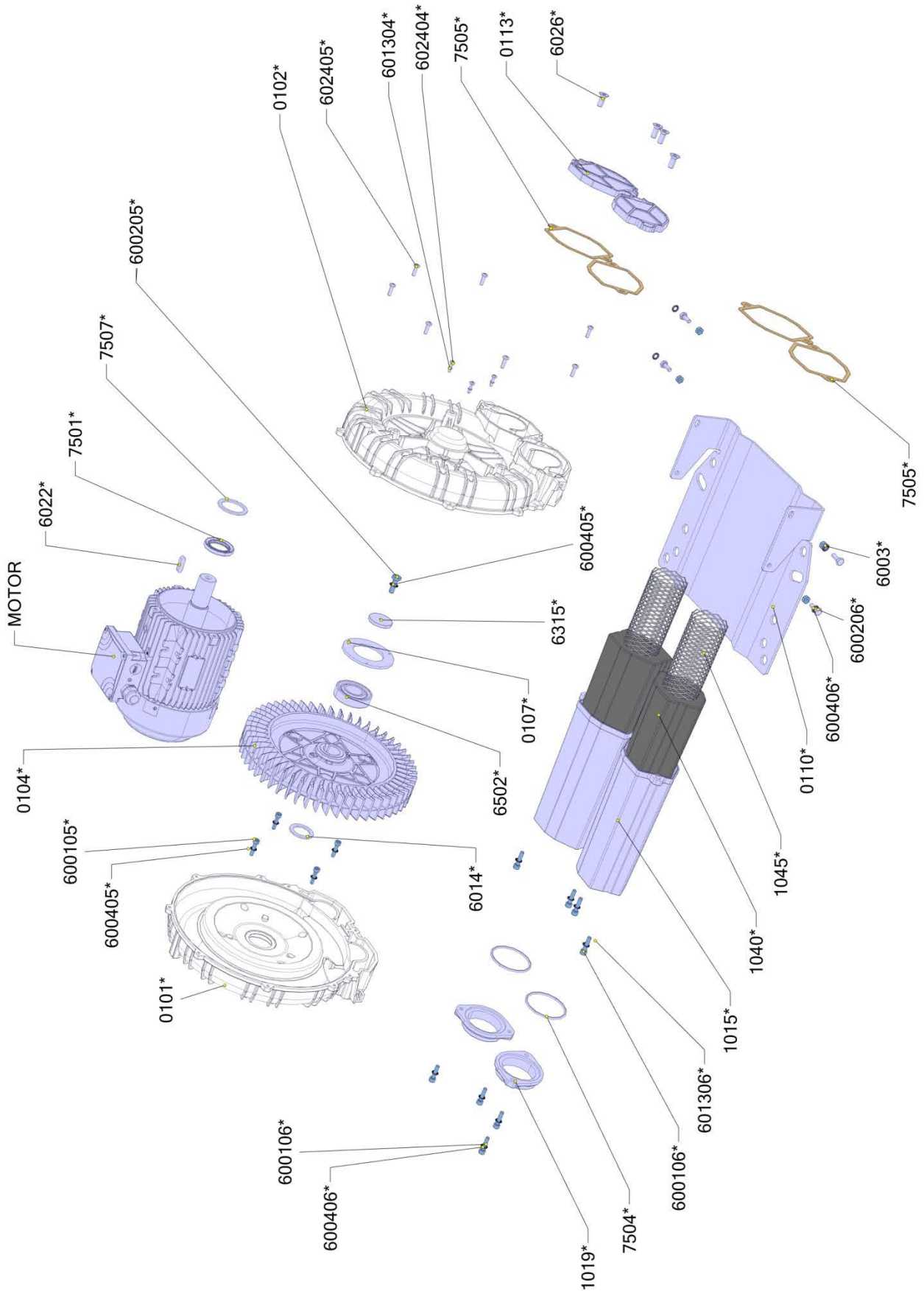
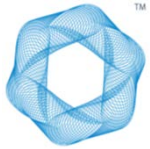


K03-MS MOR





FPZ
BLOWER TECHNOLOGY

LISTA PEZZI SOFFIANTI
BLOWER PART LIST

10/01/2014

K03-MS MOR

CODICE Code	Descrizione Description	Quantità Quantity GR.71	MATERIALE Type/Material
602405020081	VITE TCPH M5 X 20 UNI 7687 DIN 7958 ACC. CL 8.8 ZN SCREW TCPH M5 X 20 UNI 7687 DIN 7958 ACC. CL 8.8 ZN	7	CL.4.8 ACC.BASSA RESISTENZA
600105020081	VITE TCEI M5 X 20 UNI 5931 ACC. CL 8.8 ZN SCREW TCEI M5 X 20 UNI 5931 ACC. CL 8.8 ZN	4	CL.8.8 ACC.ALTA RESISTENZA
600106025081	VITE TCEI M6 X 25 UNI 5931 ACC. CL 8.8 ZN SCREW TCEI M6 X 25 UNI 5931 ACC. CL 8.8 ZN	8	CL.8.8 ACC.ALTA RESISTENZA
601306100075	ROSETTA PIANA 6.4X12.5X1.6 UNI 6592 ISO 7089 WASHER 6.4X12.5X1.6 UNI 6592 ISO 7089	4	140HV ACC.MEDIA RESISTENZA
600406000066	RONDELLA ZIGRINATA SCHNORR S6 C60 ZINC. DIN 9250 WASHER SCHNORR S6 C60 ZINC. DIN 9250	8	CL.8.8 ACC.ALTA RESISTENZA
602606020083	VITE TSEI M6 X 20 CL.10.9 UNI 5933 DIN 7991 SCREW TSEI M6 X 20 CL.10.9 UNI 5933 DIN 7991	4	CL.10.9 ACC.ALTA RESISTENZA
602404014081	VITE TCPH M4 x 14 CL.4.8 UNI 7687 DIN 7985 SCREW TCPH M4 x 14 CL.4.8 UNI 7687 DIN 7985	3	CL.4.8 ACC.MEDIA RESISTENZA
601304000073	ROSETTA PIANA ALL. 4.3X7X0.8 WASHER ALL. 4.3X7X0.8	3	140HV ACC.MEDIA RESISTENZA
600206016081	VITE TE M6 X 16 UNI 5739 ACC. CL 8.8 ZN SCREW TE M6 X 16 UNI 5739 ACC. CL 8.8 ZN	4	C.L.8.8 ACC.ALTA RESISTENZA
600306200090	DADO ESAGONALE M6 UNI 5588 - ISO 4032 HEXAGONAL NUT M6 UNI 5588 - ISO 4032	4	C.L.8.8 ACC.ALTA RESISTENZA
604420301079	RONDELLA DI AGGIUSTAGGIO SEEGER PS 20X30X0.1 SHIM WASHER SEEGER PS 20X30X0.1	1	ACCIAIO