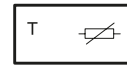


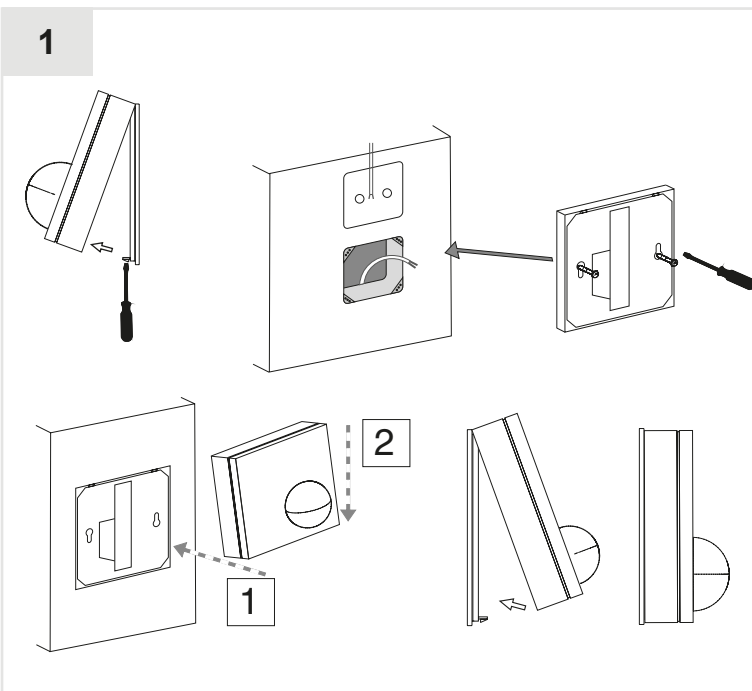
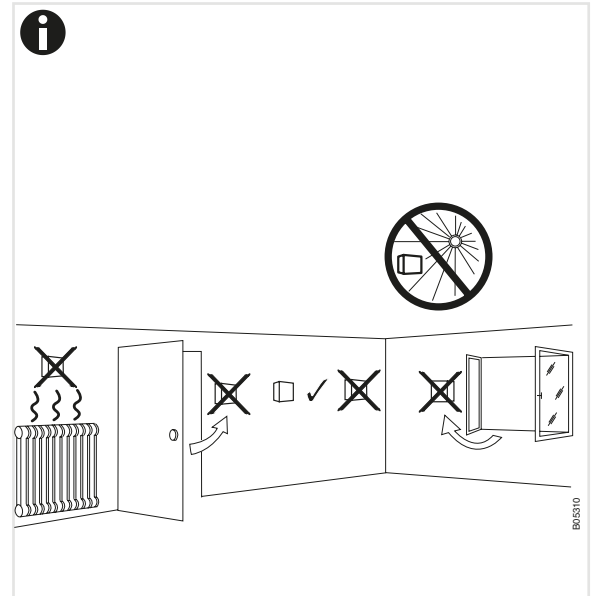
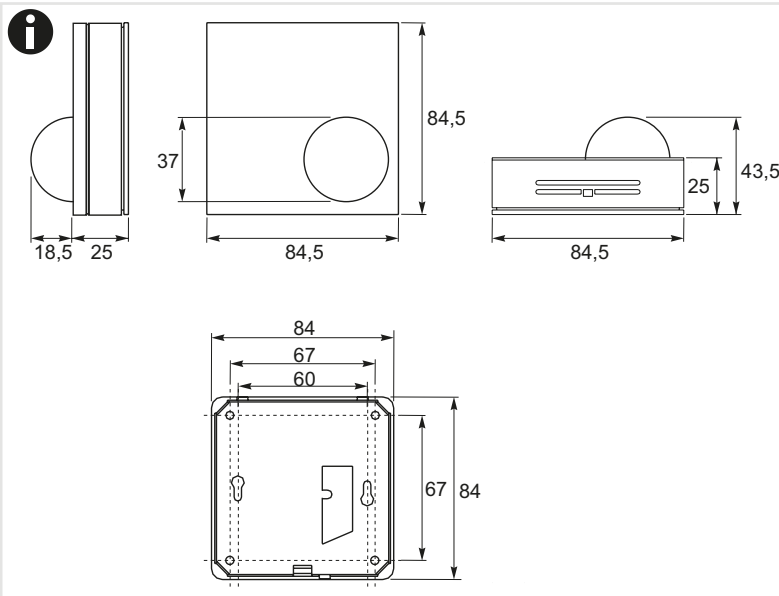
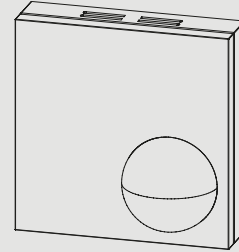
de Strahlungstemperaturfühler  
 fr Sonde de température radiante  
 en Radiation temperature sensor  
 it Sensore di temperatura radiante  
 es Sonda de temperatura radiante  
 sv Strålningstemperaturgivare  
 nl Stralingstemperatuursensor

de Montagevorschrift  
 fr Instruction de montage  
 en Fitting instructions  
 it Istruzioni di montaggio  
 es Instrucciones de montaje  
 sv Monteringanvisning  
 nl Montagevoorschrift



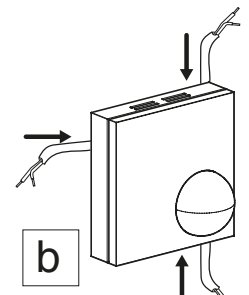
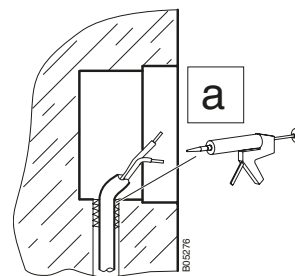
de Installationsanweisung für die Elektrofachkraft  
 fr Notice d'installation pour l'électricien  
 en Guidelines for the electrician  
 it Informazioni per l'installatore elettrico  
 es Instrucciones de instalación para el electricista  
 sv Installationsinstruktion för behörig elektriker  
 nl Installatie aanwijzing voor de elektromonteur

de Für den Einsatz in üblicher Umgebung  
 fr Pour usage dans un environnement normal  
 en For use in normal environments  
 it Per impiego in ambiente usuale  
 es Para el uso en ambiente normal  
 sv För användning i normal miljö  
 nl Voor toepassing in normale omgeving



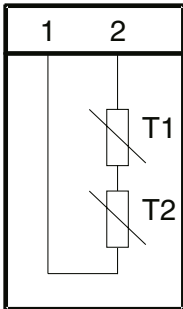
de abdichten  
 fr rendre étanche  
 en seal

it otturare  
 es junta  
 sv avtätning  
 nl afdichten



de Kabeleinführung  
 fr Insertion du câble  
 en Cable inlet  
 it Guidacavo  
 es Entrada de cables  
 sv Kabelingång  
 nl Kabelinvoer

2



		R (T1 + T2)
EGS100F705	Ni1000	1 k $\Omega$ (0° C)
EGS100F706	NTC	10 k $\Omega$ (25° C)
EGS100F707	NTC	22 k $\Omega$ (25° C)

de Dokument aufbewahren  
 fr Ce document est à conserver  
 en Retain this document  
 it Conservare il documento  
 es Guardar el documento  
 sv Spara dokumentationen  
 nl Document bewaren

© SAUTER Deutschland  
 Sauter-Cumulus GmbH  
 Hans-Bunte-Str.15  
 79108 Freiburg  
 Telefon +49 (761) 5105-0  
 Telefax +49 (761) 5105-234  
 E-Mail: sauter-cumulus@de.sauter-bc.com  
<http://www.sauter-cumulus.de>