

Power-Take-Off Drive



Self Priming Centrifugal Pump

Models 06D1-GHH and 06D3-GHH

Size 6" x 4"

PUMP SPECIFICATIONS

Size: 6" (152 mm) Victaulic® Suction x 4"(102 mm) Petroleum Discharge Flange.

Casing: (06D1) Aluminum 356-T6;
(06D3) Ductile Iron 60-40-18.
Maximum Operating Pressure 293 psi (2020 kPa).*

Enclosed Type, Eight Vane Impeller: Aluminum 356-T6.
Handles 7/8" (22,2 mm) Diameter Spherical Solids.

Impeller Shaft: Alloy Steel 8620.

Replaceable Wear Rings: (2) Gray Iron 30.

Suction Head: (06D1) Aluminum 356-T6;
(06D3) Ductile Iron 80-55-06.

Gearbox Housing: Gray Iron 30.

Gearbox Lubrication: SAE 90 Gear Oil.

Gears: Alloy Steel 8620 and Carbon Steel 12L14.

Gear Ratio: 2.56:1 Increase.

Bearings: Open Single Row Ball, Roller and Tapered Roller.

Gaskets: Buna-N, Resistant Synthetic Rubber and Cork.

Hardware: Standard Plated Steel.

Standard Equipment: Mounting Cross Member and Trunnion Assembly. Air Shift. 1800 Series Dana™ Flanges.

Optional Equipment: Bronze Impeller. Bronze Wear Rings. Auxiliary P.T.O. Stub Shaft. Speedometer Adaptor.

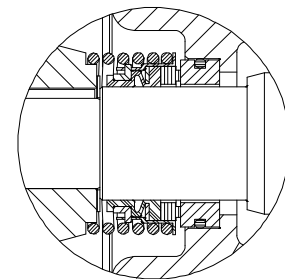
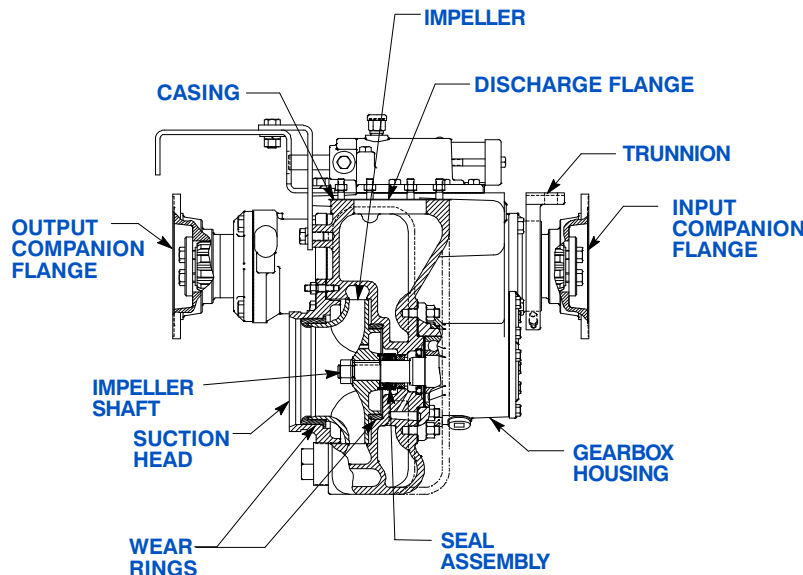
Victaulic is a Registered Trademark of Victaulic Company of America.

Dana is a Registered Trademark of Dana Corporation.

**Consult Factory for Applications Exceeding Maximum Pressure and/or Temperature Indicated.*



Rotation:
Clockwise Facing Gearbox Input Shaft.

**SEAL DETAIL**

Type 2, Mechanical, Self-Lubricated. Carbon Rotating Face. Ni-Resist Stationary Face. Fluorocarbon Elastomers (DuPont Viton® or Equivalent). Stainless Steel 18-8 Cage and Spring. Maximum Temperature of Liquid Pumped, 160°F (71°C).*



THE GORMAN-RUPP COMPANY • MANSFIELD, OHIO

GORMAN-RUPP OF CANADA LIMITED • ST. THOMAS, ONTARIO, CANADA

www.grpumps.com

Specifications Subject to Change Without Notice

Printed in U.S.A.

Specification Data

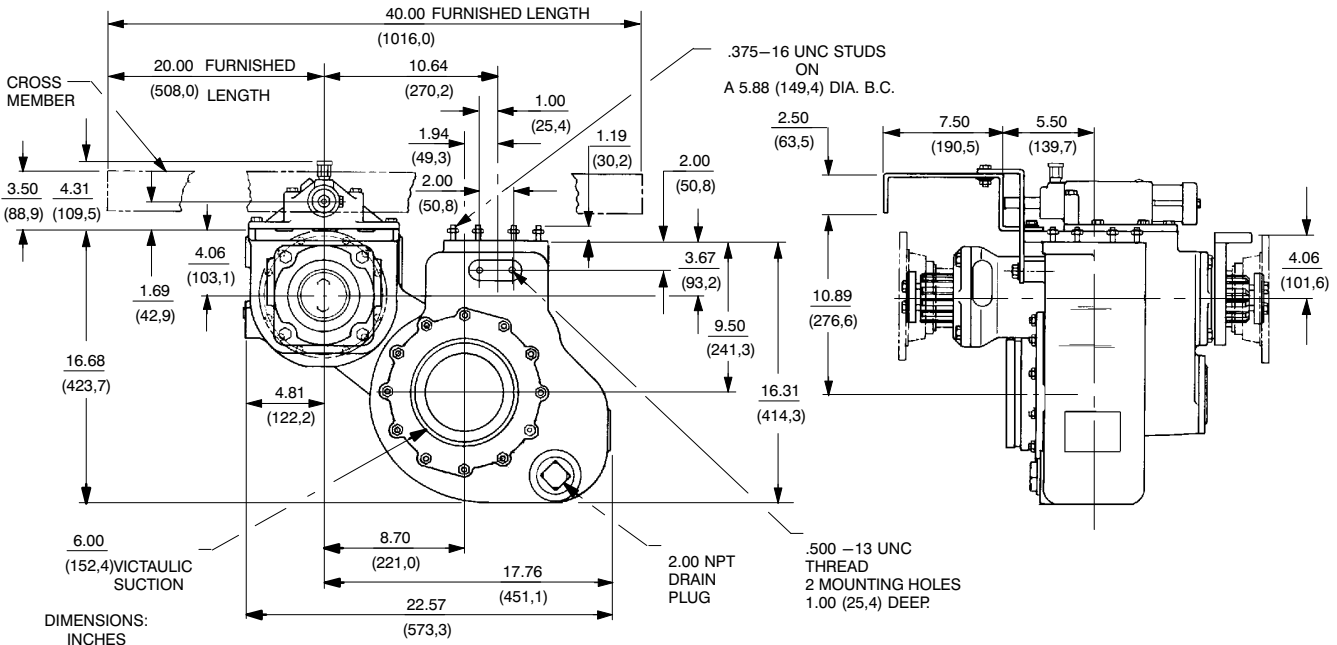
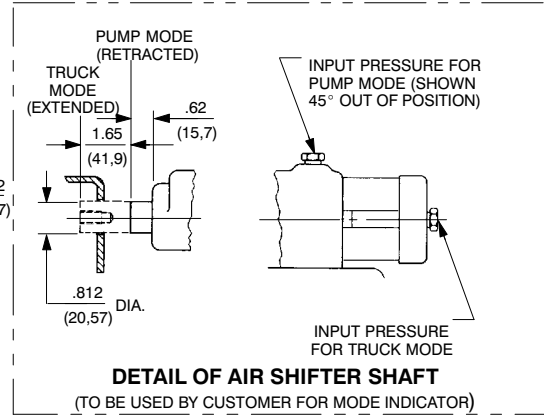
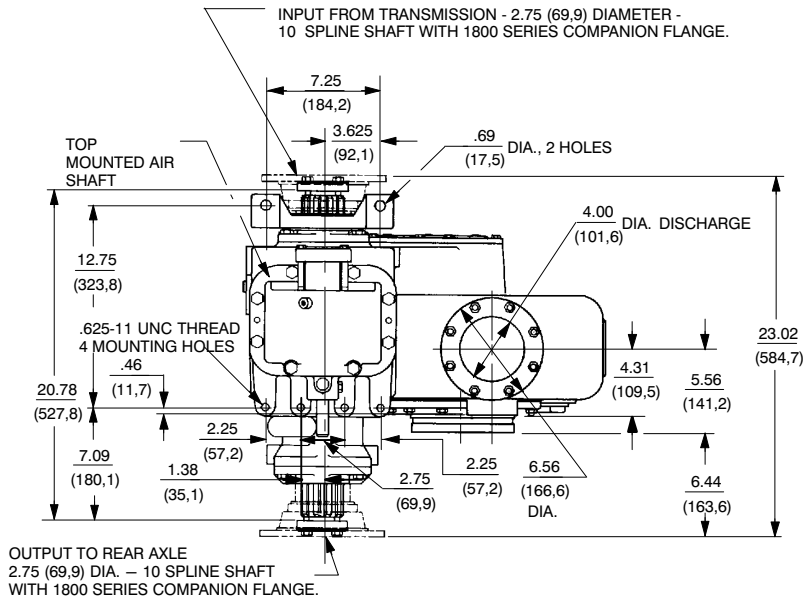
APPROXIMATE DIMENSIONS and WEIGHTS

SECTION 110, PAGE 653

06D1-GHH

06D3-GHH

NET WEIGHT: 310 LBS. (141 KG.) 386 LBS. (175 KG.)
SHIPPING WEIGHT: 373 LBS. (169 KG.) 436 LBS. (198 KG.)
EXPORT CRATE SIZE: 14.3 CU. FT. (0,40 CU. M.) 15.3 CU. FT.(0,43 CU. M.)



TO PREVENT RAKING OF GEARS WITH AUTOMATIC TRANSMISSIONS, INSTALL BRAKE TO LIMIT INPUT SHAFT ROTATION TO NO MORE THAN 15 RPM, MAXIMUM DURING SHIFTING.

FOR AIR SHIFT, 70 - 140 PSI (482 - 965 kPa) AIR PRESSURE REQUIRED AT GEARBOX AIR CYLINDER, 1/4" (6,4 mm) LINES RECOMMENDED.

Victaulic is a Registered Trademark of Victaulic Company of America.

GEARBOX THROUGH TORQUE CAPACITY BASED ON SHAFT & SPLINE SIZE				
DIESEL		TRANSMISSION	GASOLINE	
AUTO	MANUAL		AUTO	MANUAL
11,000	10,000	FT. - LBS. MAXIMUM	13,300	12,300
1,521	1,383	KGM MAXIMUM	1,839	1,701



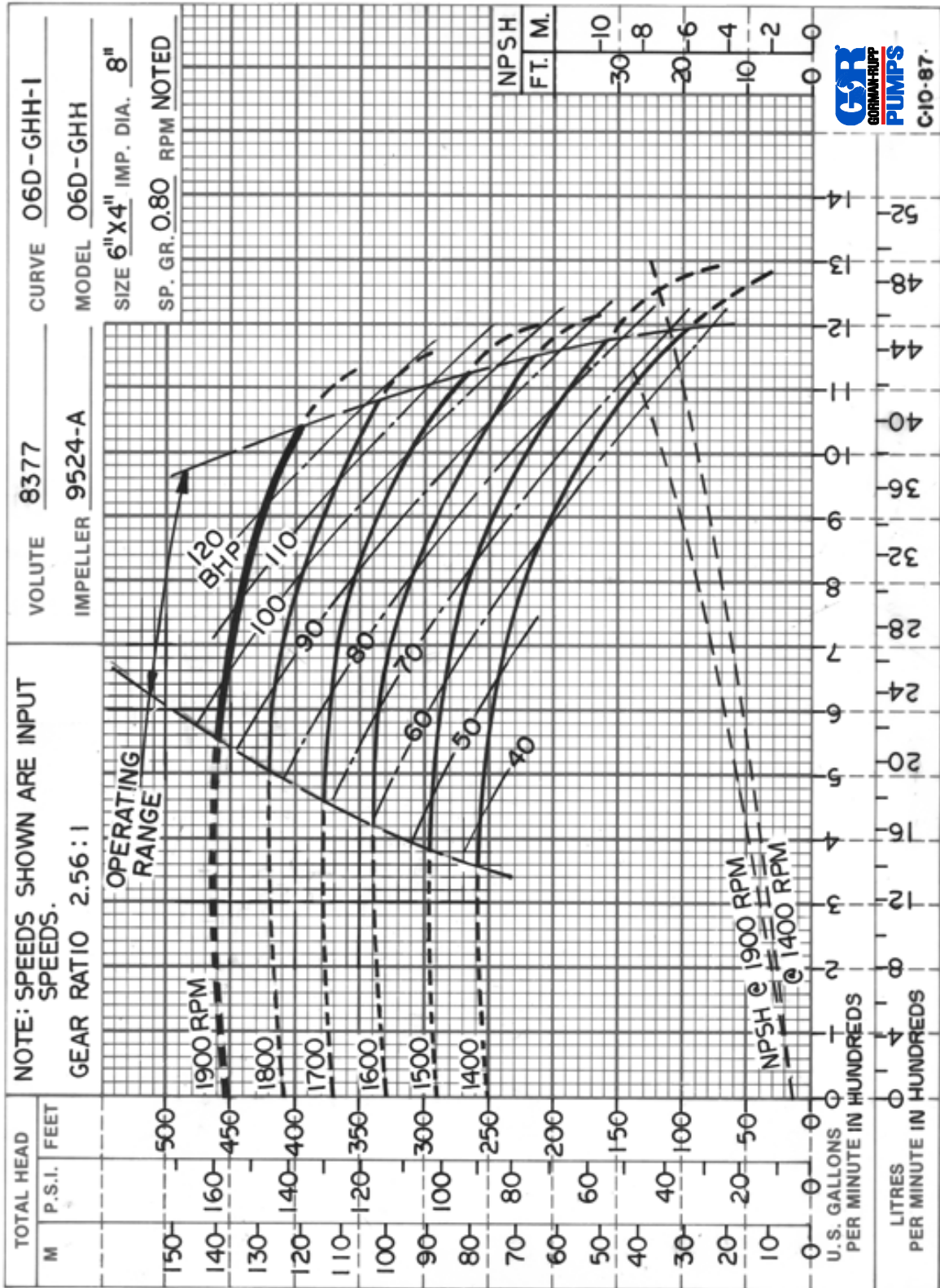
THE GORMAN-RUPP COMPANY • MANSFIELD, OHIO

GORMAN-RUPP OF CANADA LIMITED • ST. THOMAS, ONTARIO, CANADA

Specifications Subject to Change Without Notice

Printed in U.S.A.

PERFORMANCE BASED ON PETROLEUM



THE GORMAN-RUPP COMPANY • MANSFIELD, OHIO

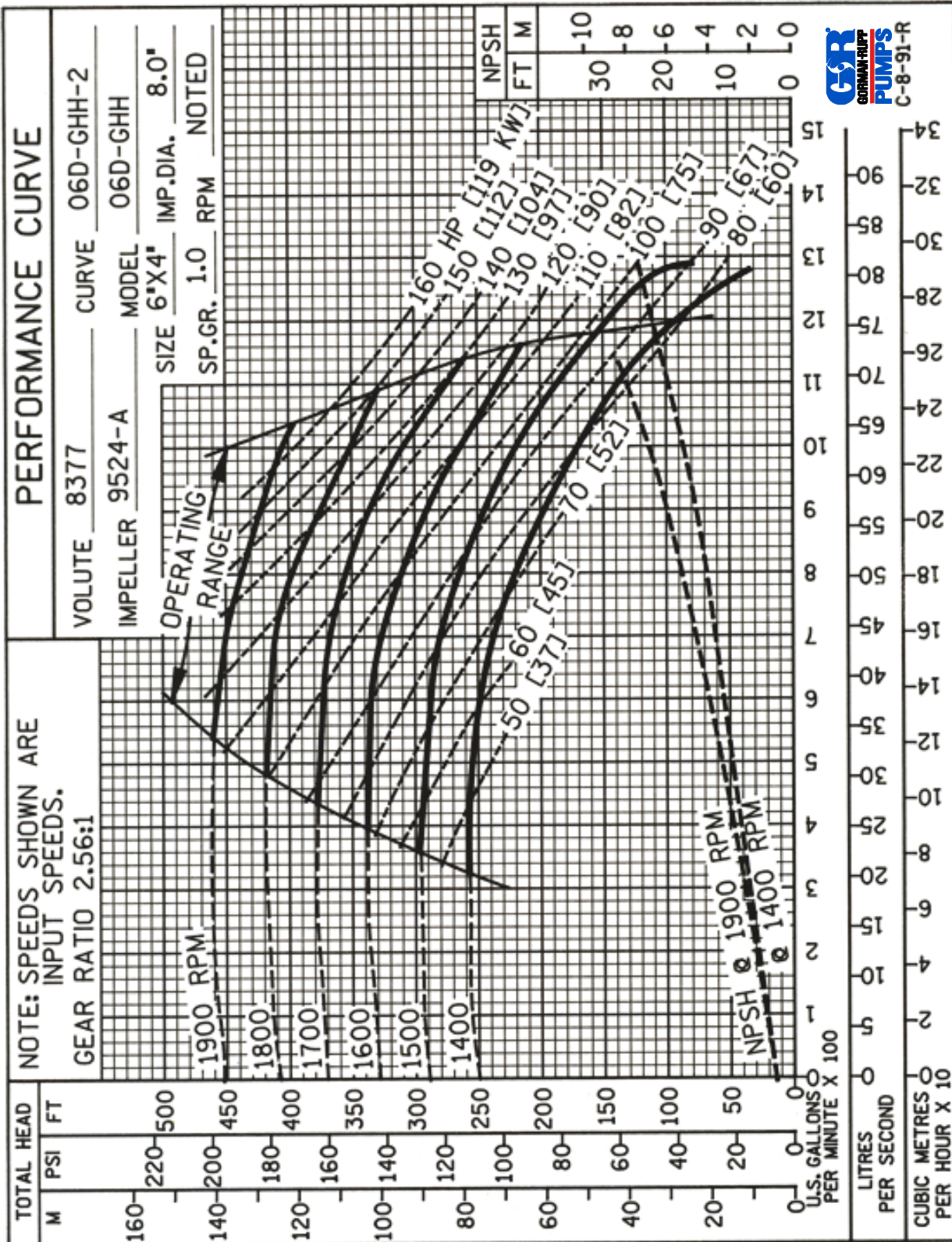
GORMAN-RUPP OF CANADA LIMITED • ST. THOMAS, ONTARIO, CANADA

www.grpumps.com

Specifications Subject to Change Without Notice

Printed in U.S.A.

PERFORMANCE BASED ON WATER



THE GORMAN-RUPP COMPANY • MANSFIELD, OHIO

GORMAN-RUPP OF CANADA LIMITED • ST. THOMAS, ONTARIO, CANADA

www.grpumps.com

Specifications Subject to Change Without Notice

Printed in U.S.A.