

Technical Data

Low pressure version - 2964 Series

Material

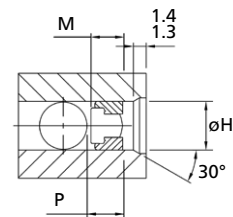
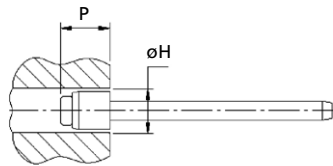
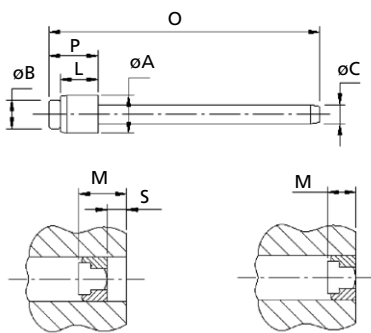
Sleeve: Aluminium alloy

(BS1473/4/5 - 6061/AA6061 EN 573-3 AlMg1SiCu Werkstoff 3.3211)

Stem: Carbon steel, hardened and tempered,

Zinc plated, clear trivalent passivated with top seal

(BS 3111 type 10 DIN 1654 35B2)



Taper hole entry only required for automated assembly.

ø	O max.	øB ref.	øA max.	L max.	øC ref.	øH			P ¹⁾ req.	M ¹⁾		Part No
						min.	max.	rec.		min.	max.	
8.0	50.8	6.0	7.9	7.8	3.55	8.0	8.15	8.0	9.90	7.50	9.50	02910-10790
9.0	51.8	6.1	8.8	8.5	3.58	9.0	9.4	9.0	11.71	7.19	10.57	02964-00911
10.0	52.6	7.0	9.8	9.5	3.90	10.0	10.4	10.2	13.05	8.81	11.46	02964-01012
11.0	53.4	7.8	10.8	9.8	4.40	11.0	11.4	11.2	13.66	9.41	12.11	02964-01113
12.0	53.4	7.8	11.8	9.5	4.40	12.0	12.4	12.2	13.43	9.45	11.96	02964-01215
13.0	62.0	8.6	12.8	10.3	4.80	13.0	13.4	13.2	14.74	10.04	12.51	02964-01315
14.0	62.8	9.4	13.8	11.0	5.30	14.0	14.4	14.2	15.65	11.70	13.87	02964-01415
16.0	64.8	11.0	15.8	12.6	6.00	16.0	16.4	16.2	18.04	13.88	16.00	02964-01620

all dimensions in mm

1) Values for use with a flat nose tip (except for 4.0 & 5.0 mm where only stepped nose tips are available):

- Add „S“ = 1 mm / 2 mm / 8 mm to „P“ and „M“ values when a 1 mm / 2 mm / 8 mm extended nose tip is used

Avseal® II

The Avseal II range of blind sealing plugs can be installed with the current selection of structural hand tools and automated placing equipment.

The tapered end of the plug's stem ensures it is easy to feed into the tooling equipment, while the taper on the sleeve allows ease of entry into an application.

Hand Tools



Range of Genesis® nG models



73200 model



734 AV™ model

Placing Matrix

Diameter	Recommended Hand Tools				
	nG2/nG2-S	nG3	nG4	73200	734 AV
4 mm	2961				
5 mm	2961				
6 mm	2961	2961			
7 mm	2961	2961	2961		
8 mm		2961, 2964	2961, 2964		
9 mm		2964	2961, 2964		
10 mm			2961, 2964		
11 mm			2964	2961	
12 mm			2964	2961	
13 mm				2964	
14 mm				2964	
16 mm					2964

2961 series (High pressure version) 2964 series (Low pressure version)
Other tools available, please ask your STANLEY Engineered Fastening contact.